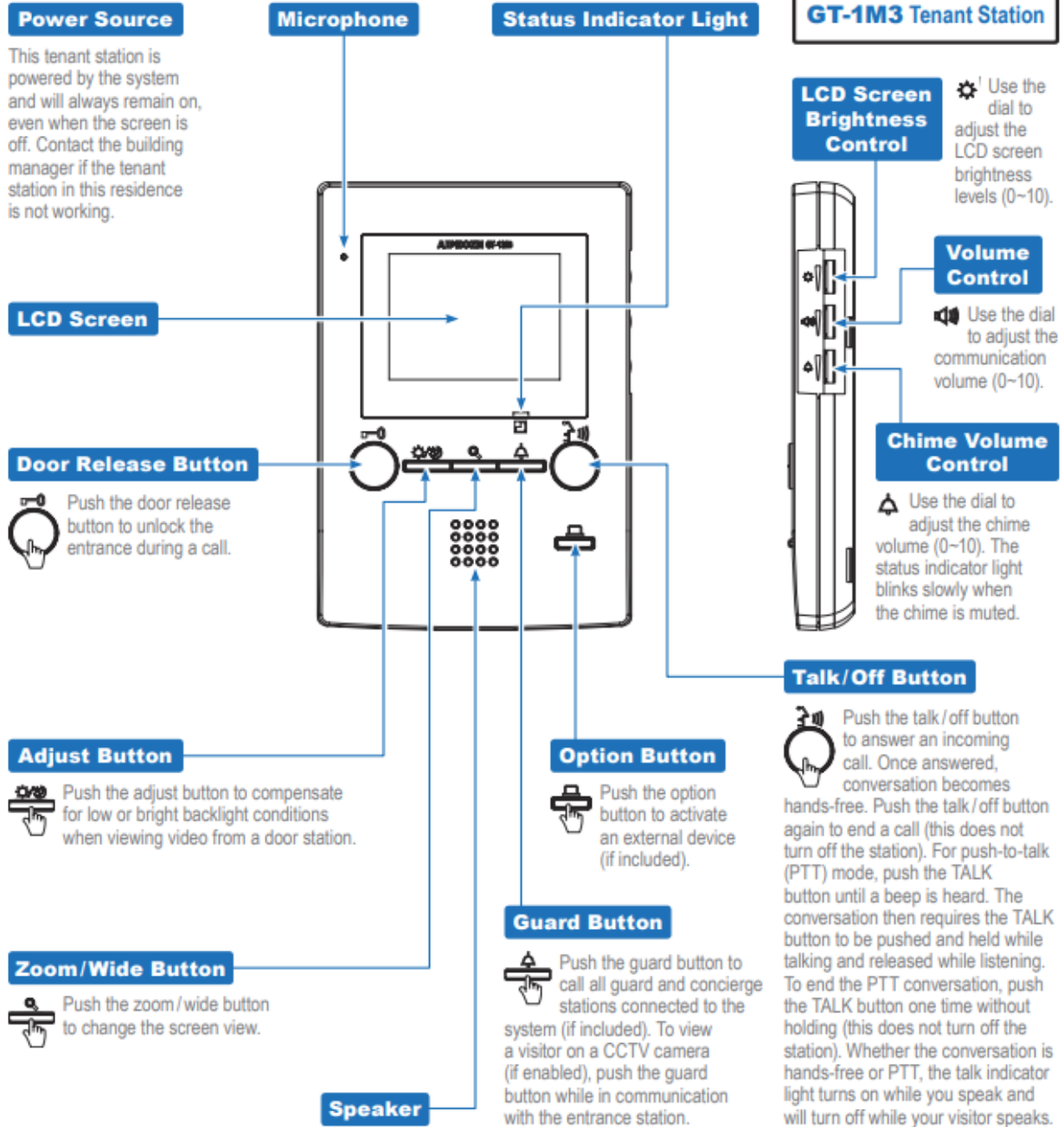


# This operation guide describes the basic functions of your GT Series Tenant Station

For a complete operation manual (3.71 MB), scan QR code or use link to download it from the manufacturer's website: [www.aiphone.com/gt-1m3\\_op-man](http://www.aiphone.com/gt-1m3_op-man)



Access can be gained by your guests if they press your Apartment number and the green bell. The call panel for your guests is on the wall between the walk in and drive in gates. There is one also located in front of the letterboxes in each building. When you see who wants access, press the Door Release button and it will open both the walk in and drive in gate and building front door at same time. Alternatively when you want to gain access into The Keys wave your dongle past the proximity card reader which is that little grey box beside the call panel at both locations. Access gate codes are no longer operational except for emergency services, postie, and garbage collection.